



**TECHNICAL ASSISTANCE TO  
THE NATIONAL COPERNICUS  
CAPACITY SUPPORT ACTION  
PROGRAMME FOR  
THE PHILIPPINES (CopPhil)**

**EU Copernicus Philippines Call  
for Application  
Master Scholarship 2025/2027**

---

## 1. APPLY NOW TO THE EU COPPHIL SCHOLARSHIP PROGRAMME TO PURSUE A MASTER'S DEGREE IN THE EUROPEAN UNION FOR EARTH OBSERVATION SPECIALISTS WITH ENVIRONMENTAL COMMITMENT

---

Are you an Earth observation or Remote Sensing specialist with a strong commitment for environmental protection and disaster risk reduction, looking for the next challenge? Are you already working for the government on these topics and want to broaden your expertise? The **EU CopPhil Scholarship programme** might be for you!

The European Union's (EU) Copernicus programme, and CopPhil, a flagship initiative of the EU's Global Gateway Strategy, is proud to announce the launch of the **EU CopPhil Scholarship Programme** for advanced studies in **Earth Observation** and **Remote Sensing**, implemented by Stantec.

Fully sponsored by the EU, this programme is open to Filipino citizens working in government agencies, including the Philippines Space Agency (PhilSA), the Department of Science and Technology (DOST), the Department of Environment and Natural Resources (DENR), the Department of Human Settlements and Urban Development (DSHUD), the Department of Agriculture (DA), and the Mindanao Development Authority (MinDA).

The EU Copernicus programme is all about using cutting-edge space technology for sustainable future. Applications are being developed in agriculture, ground-motion monitoring, blue economy, climate change adaptation, just to name a few. This is why we are calling for applicants with a strong academic foundation and a commitment to pursuing a master's degree in Earth observation and Remote Sensing focusing on **climate change, natural resources, and disaster management**. We are inviting you to be a part of the Global Gateway vision to harness science for green and digital transition. Specifically, the scholarships calls for scientists to study and utilize advanced **Copernicus data and information services** for enhancing policymaking, and governance capabilities in their government agencies, contributing to a lasting impact.

The EU CopPhil scholarship programme for master's studies spans a 24-month period, running from September 2025 to July 2027.

Interested? Visit <https://master-cde.eu/> to explore pre-selected institutions offering Earth observation and Remote Sensing courses. If you meet the specific admission requirements, we encourage you to apply directly to the university of your choice. After securing a certificate of admission, send the proof of acceptance together with the rest of the application package to apply for the EU CopPhil scholarship programme. See more details on the application requirements below.

We welcome and encourage applicants from all backgrounds, regardless of gender, disability, ethnicity, religion, or socioeconomic status.

---

## 2. WHAT IS IN IT FOR YOU?

---

The EU CopPhil Scholarship programme provides full financial support for successful candidates to pursue an MSc degree in Earth Observation or Remote Sensing in distinguished European Union

Member States universities that offer specialised courses and cutting-edge tools in utilising Copernicus data and services.

The scholarship programme offers a lump sum financial package of up to €33,500, corresponding to 2.072.712 PHP<sup>1</sup>, for the entire 24-month study period, covering tuition and matriculation fees.

The scholarship also includes support with the issuance of invitation letters for visa applications, round-trip airfare, allowances, student accommodation rental, and international insurance, all based on a reasonable expenditure estimate.

Applicants who opt to enrol in other European Union Member States universities should note that tuition and matriculation costs may vary depending on the country. The scholarship will cover expenses up to the maximum financial package amount, but any additional costs exceeding this limit must be covered by the applicants using their own resources.

---

### 3. ELIGIBILITY REQUIREMENTS

---

The EU CopPhil Scholarship programme is open to Filipino citizens interested in pursuing graduate studies in MSc programmes. Applicants must be currently employed by partner government agencies and demonstrate a commitment to advancing their knowledge and skills in Digital Earth observation and remote sensing in Europe.

The goal of the EU CopPhil scholarship programme is to create lasting positive impact in policymaking and governance capabilities in the Philippine government agencies in the field of Earth Observation. This is why successful applicants must pledge to return to their respective government agencies in the Philippines upon completion of their studies for a minimum period of three years.

As a successful candidate for the scholarship graduate courses, you:

- Must be a Filipino citizen.
- Applicants must be between 22 and 30 years old as of 1 September 2025.
- Must have a current work assignment related to the digital earth discipline in a partner government agency of the Philippines.
- Must have no pending administrative or legal proceedings.
- Must not have received any other international scholarship or grants in the past and must not currently be receiving any scholarship support or grants.
- Provide one letter of recommendation by work supervisors or academic professors.
- Must provide proof of acceptance from the European Union university for the intended course of study.
- Applicants must hold an undergraduate degree in a geospatial discipline, such as Geography, Geo-informatics, Geology, Geosciences, Geospatial Information Science, Geomatics & Geodetic Engineering, (Spatial) Data Science, Cartography, Remote Sensing, Ecology & Conservation, Surveying & Mapping, Geodesy & Cadastre, Geophysical Engineering, Applied Physics, Agriculture, Resource Management, Meteorology & Climate Science, Urban Planning, Regional Planning, Landscape Planning, Spatial Planning, Public Administration, Infrastructure Management, Civil Engineering, Forestry & Environment, Earth & Environmental Sciences, Wildlife Conservation & Zoo Biology, Marine Science, Architecture &

---

<sup>1</sup> The amount was calculated based on the exchange rate as of 5 December 2024.



Town Planning, Geo-media, or other related discipline (Source: Copernicus Master in Digital Earth (<https://master-cde.eu/programme/>)).

- Will submit a plan for the research, thesis, or dissertation plan aligned with the key development areas of their employer agency, i.e. Earth observation, remote sensing, disaster risk management, natural resources management, and climate change.

---

## 4. WHEN AND HOW TO APPLY

---

### 1. Call for applications

The call for scholarship applications for the **2025–2027 academic year** will begin in **December 2024**. The EU CopPhil Scholarship programme encourages applications to the pre-identified **Copernicus Master's in Digital EO** (for more information, visit <https://master-cde.eu/>). The application period opened on 11 November and will close on 19 January 2025.

However, applicants are not limited to these universities and may apply to other European Union Member States universities offering MSc courses in digital Earth Observation and Remote Sensing as long as the applications deadlines would match the deadlines to apply for the scholarship.

Once you have secured a successful application and accepted to a European Union Member State university of your choice offering relevant courses in Earth observation, submit your application package to the EU CopPhil Scholarship Committee by no later than **February 28th, 2025**.

The call for applications will be posted on the website and social media channels of the Philippine Space Agency.

**Applications must be submitted to [eucopephil.scholarship@copphilta.eu](mailto:eucopephil.scholarship@copphilta.eu)!**

### 2. Application for admission to universities

Applicants must apply directly to the European Union Member State university of their choice. Once an applicant has successfully passed the admission process and obtained a certificate of admission, they must submit this certificate to the Scholarship Secretariat for further evaluation and processing of their scholarship application. For more information on the pre-selected institutions offering Earth observation and Remote Sensing courses and admission requirements, you can visit <https://master-cde.eu/>.

### 3. Application package

Applicants must submit a complete set of documentary requirements to the Scholarship Committee, including the following:

- Proof of acceptance to the university
- Scholarship letter of intent
- Updated CV
- Authenticated PSA birth certificate
- One letter of recommendation
- NBI clearance
- Diploma/certificate of graduation
- Transcript of records
- Passport or government-issued ID

- Work certificate

#### **4. Evaluation of applications**

The Scholarship Committee will review the submitted documents and conduct interviews with the top three applicants. A merit-based scoring system will be used to finalise the selection of scholars. All applicants will be notified of the results, whether accepted or not.

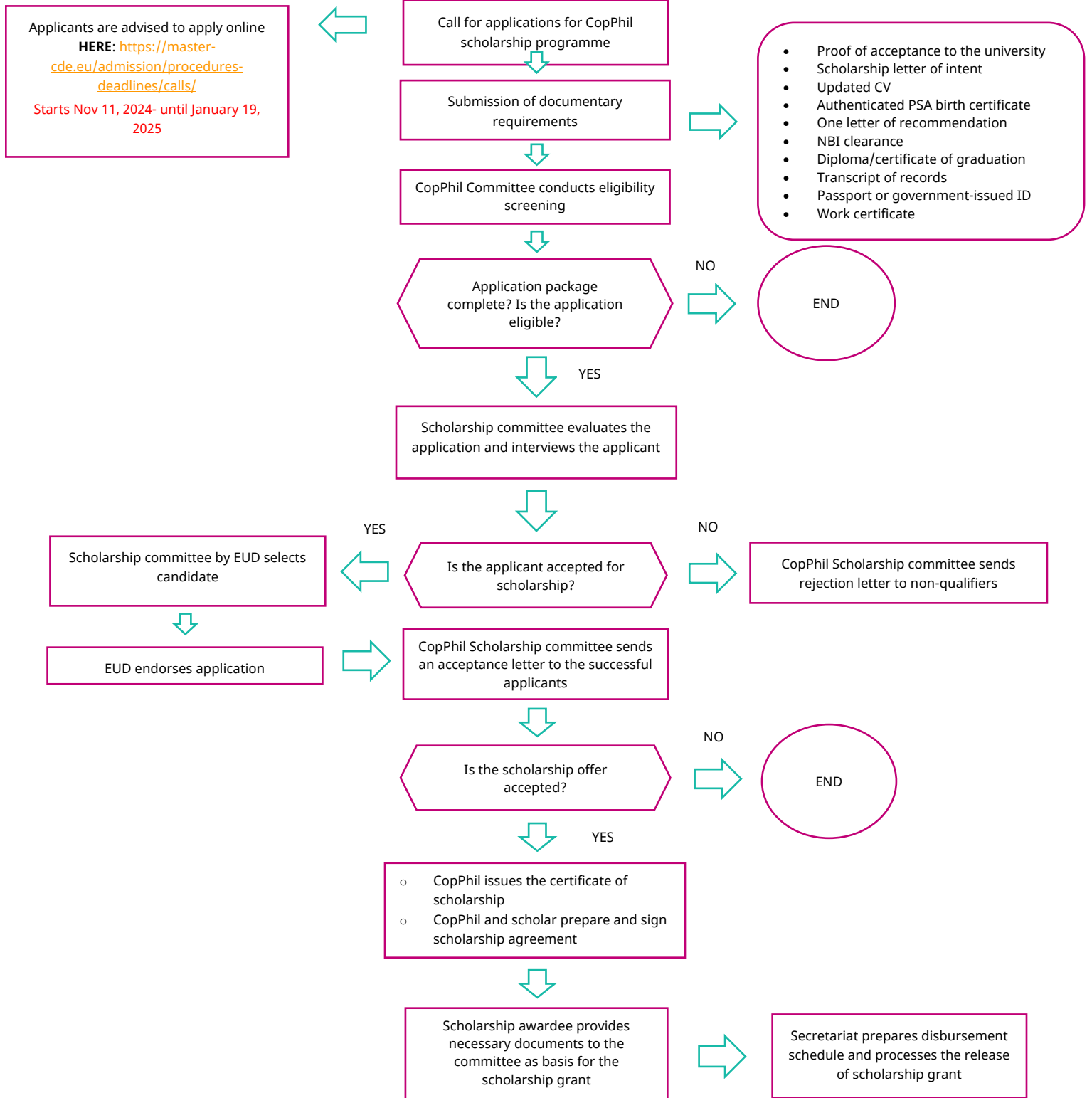
#### **5. Awarding of the scholarship**

6. Based on the merit evaluation and document review, the scholarship committee composed by the European Union Delegation to the Philippines will select and endorse the final awardee.

#### **Support for the successful scholars**

As a successful candidate and scholar in the EU CopPhil Scholarship Programme, you will receive support and guidance throughout the scholarship period, as needed.

**Process flow of scholarship selection (12 months process)**



## 5. TIME FRAME

ACTIVITIES	MONTHS (in number) Dec 2024 – Oct 2025											
	12	01	02	03	04	05	06	07	08	09	10	
Posting/announcement of Call of scholarship application	→											
Applicants application for admission in the European Union universities	→	→										
Receive, review and evaluation of application documents			→	→								
Awarding of scholarship certificate and contract signing				→								
Supplementary administrative, logistic, documentary requirements submission and institution coordination and preparation for both the scholar and CopPhil scholarship focal person									→			
On-boarding of the scholar(s)									→			
Week 3/4 university master programme orientation										→		
School classes begin										→		
Monitoring / Reporting (until end of 00*0study)												→